

Art.-Nr. 699029

BACK

FRONT

ENTRAcode+ FD Codelestatator(699025)

ENTRAcode+ FD Edeistahlabdeckung(699026)

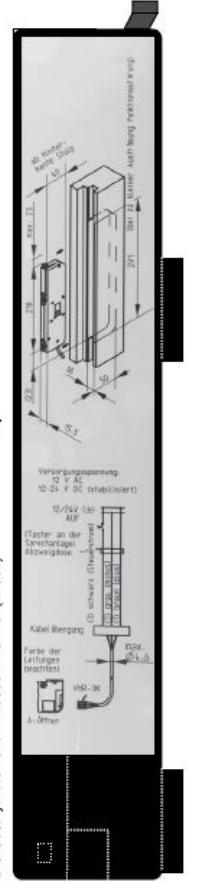
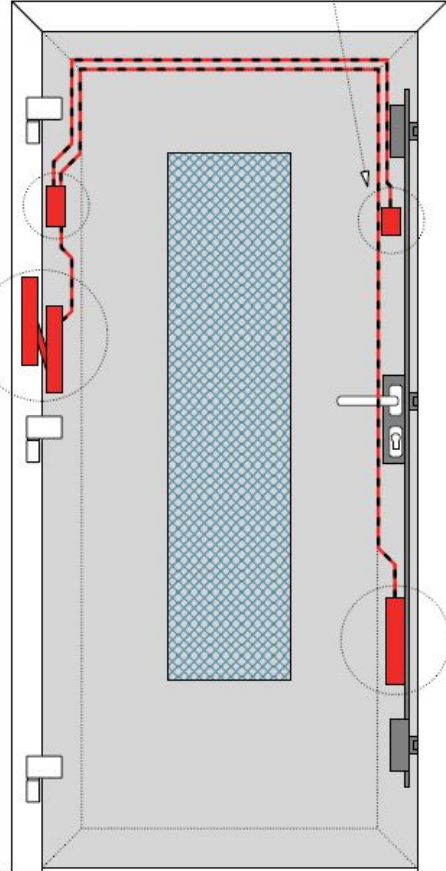
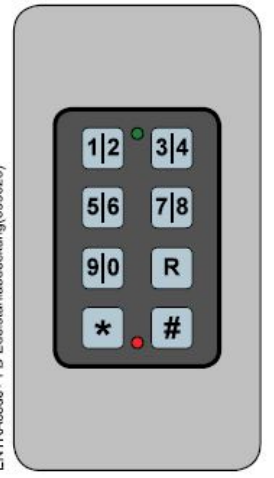
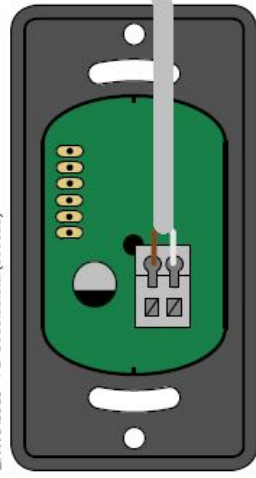
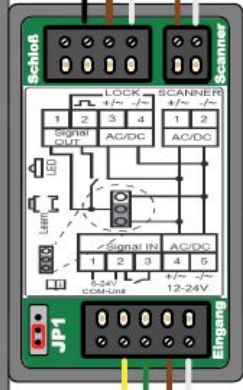
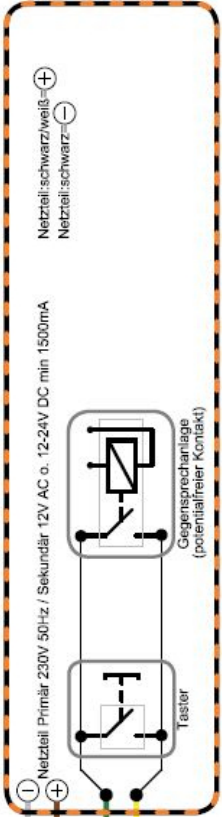
ENTRAsys+ RX Funkempfänger(22074)

Art.-Nr. 699028

G-U Leitung (im Anbauset enthalten) optional Art.-Nr.69903C

G-U Security Automatic Anbauset A-Offner (22882)

Bauseitige Verdrahtung



Kabelübergang(27719)

Legende LIYY 4x0,34mm²

| | | |
|-------|----|--------------------|
| Pin 1 | ws | -VCC (GND) |
| Pin 2 | bn | +VCC |
| Pin 3 | gn | pot.freier Eingang |
| Pin 4 | gl | pot.freier Eingang |

G-U Leitung

| | |
|-------|------------|
| br | + VCC |
| gr/ws | - GND |
| sw/gn | + Freigabe |

Farbcode Adernfarben

| | |
|---------|----|
| Schwarz | sw |
| Braun | br |
| Rot | rt |
| Orange | or |
| Gelb | ge |
| Grün | gn |
| Blau | bl |
| Violett | vi |
| Grau | gr |
| Weiß | ws |
| Rosa | rs |